

# PRL Architectural Metals



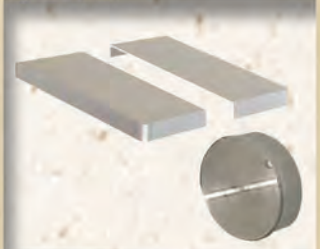
Complete Brake-formed & metal fabrication are an example of our Full Manufacturing in house capabilities



**Column Covers**  
Closed



**Panels**  
Open corner



**Covers**  
Welded/finished corners



**Channels**  
Special size/depths



**Cladding/Flashing**  
Storefront



**Handrail Shapes**  
Top Caps/Base Covers

## Offering,

### Clad

- Full Frame Doors
- Door Header/Jambs/  
T-Holds
- Storefront Framing
- Column Covers
- Cornices
- Panel Pans

### Brakeformed Shapes

- Head/Sill flashing
- Angles
- Hat
- J-Z Shapes
- Open/Closed Corner
- Channel

### Handrail

- Top Cap
- Miter Returns/  
Corners
- Connectors

### Metal Finishing

- Mirror Polishing
- Directional
- Satin Brush

## • One Stop Shop

for estimates  
& orders Call,



**GLASS  
SYSTEMS**  
www.prlglass.com

ph (800) 433-7044  
fx (626) 968-9256  
251 Mason Wy. Industry, CA 91746

"Has the **fastest**  
leadtimes in the industry"

**Aluminum**  
ARCHITECTURAL PRODUCTS  
www.prlaluminum.com

ph (877) 775-2586  
fx (877) 274-8800  
14760 Don Julian Rd. Industry, CA 91746

**2" Stainless Steel Top Cap**

- #8 Pol \$15.95 lft.
  - #4 Satin \$16.95 lft.
- 10' Lengths



vinyl Insert \$1.35 lft.

**2" Aluminum Top Cap**

- Mill \$5.50 lft.
  - Clear \$6.50 lft
  - Bronze \$6.95 lft
- 10', 12' & 20' Lengths available



**4" Aluminum HR Base  
Wet glazed**

- Mill Fin \$20.75 lft.  
without holes
  - Mill Fin \$23.50 lft.  
w/12" ctc holes
- Base in 10', 12', 20' Lengths available

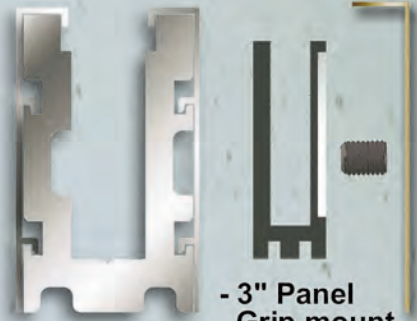


**Cladding \* add per side**

- #8 Pol. SS \$3.95 lft\*
- #4 Satin SS \$3.50 lft\*

**4" Aluminum HR Base Dryset**

- Mill Fin  
without holes  
\$18.95\* lft.
  - Mill Fin  
w/12" cts holes  
\$21.95\* lft.
- \*include mill coverplates



- 3" Panel  
Grip mount  
\$7.50 ea

**Coverplates  
add per side**

- Clr. Ano \$2.75 lft.
- Bze. Ano \$2.95 lft.
- SS #8 \$3.95 lft.
- SS #4 \$3.50 lft.

- **Easy/Fast Glass  
Setting & Adjustment**
- **Proven Labor Saver**

No additional  
special tools  
required

HR/GR Fittings & 10', 12', 20' Lengths available

**Aluminum Packages**

Doors with Panic Devices

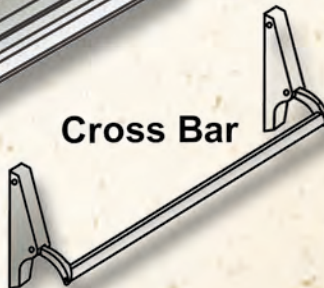
**10% off**



Contempo



Cross Bar



**Combine your Aluminum  
Storefront metal & Glass.**

**Receive an  
additional**

**7% off**



**for estimates & orders,**

Call (877) 775 2586  
fx (877) 274 8800

**www.prlaluminum.com**

14760 DON JULIAN RD. ● CITY OF INDUSTRY, CA. ● 91746