

ALL IDEAS, DESIGNS, ARRANGEMENTS AND PLANS INDICATED OR REPRESENTED BY THESE DRAWINGS ARE OWNED BY AND THE PROPERTY OF PRL GLASS SYSTEMS INC. NO PART THEREOF SHALL BE REPRODUCED, COPIED, ADAPTED, DISTRIBUTED TO OTHERS, PUBLISHED, SOLD OR OTHERWISE USED WITHOUT THE PRIOR WRITTEN CONSENT OF AND APPROPRIATE COMPENSATION TO PRL GLASS SYSTEMS INC. COPYRIGHT ©

THIS DRAWING IS NOT TO SCALE IF NOT PRINTED ON 24" X 36" PAPER

PRL SYSTEMS XXXXXX.dwg PLOTTED AT 100% 12/22/14

IMPORTANT DESIGN NOTE:

ARCHITECT OF RECORD'S APPROVAL

STRUCTURAL ENGINEER OF RECORD'S APPROVAL

STRUCTURAL ENGINEER'S APPROVAL

GENERAL CONTRACTOR'S APPROVAL

REVISIONS	BY
△	
△	
△	
△	
△	
△	
△	

job name
job name
job name
address

GENERAL CONTRACTOR: XXXXXXXX ARCHITECT: XXXXXXXX

DATE: March, 21, 2014

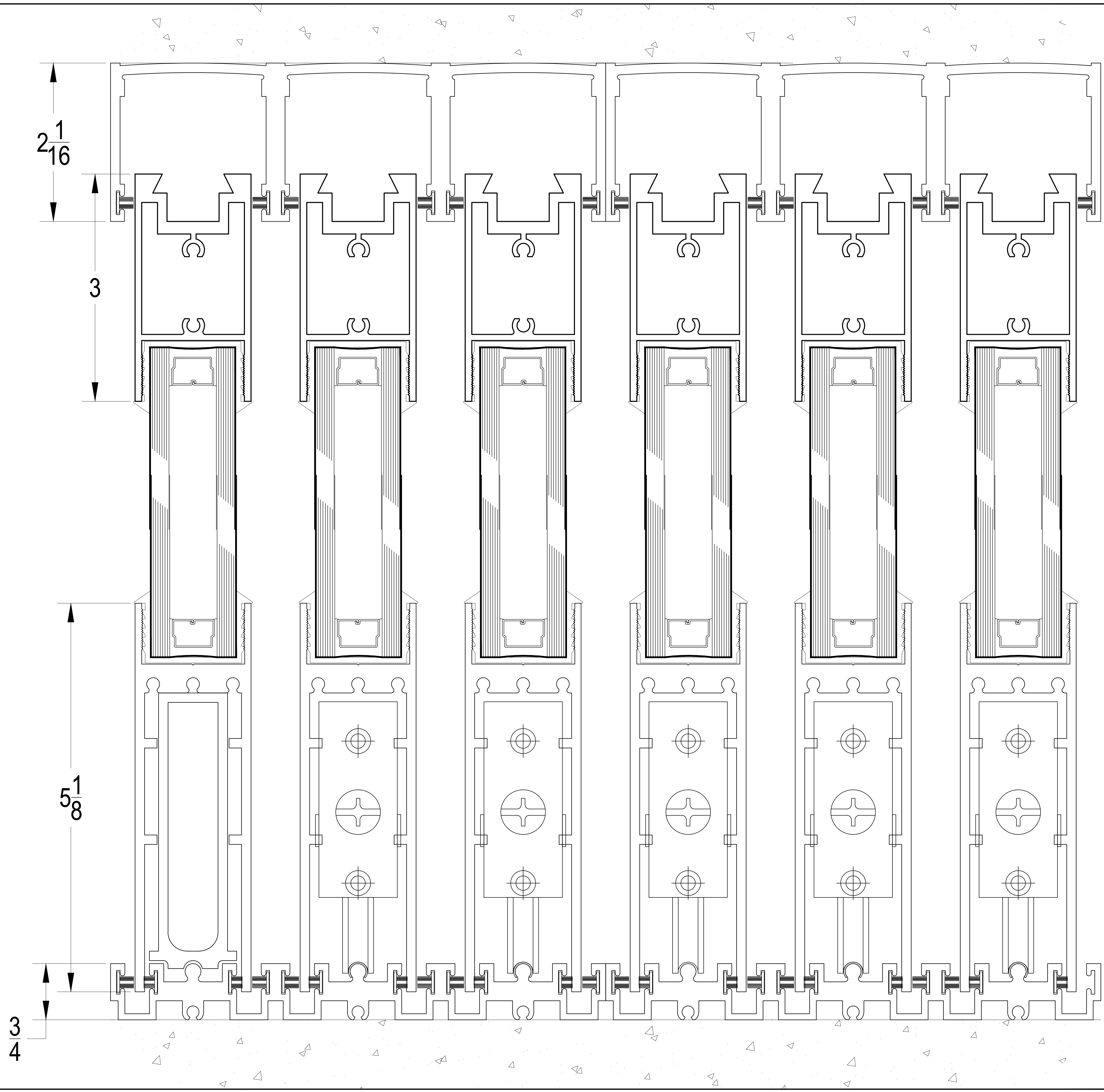
SCALE: 1"=1'-0"

DRAWN: P

JOB: XXXXXXXX

SHEET

1.01



IMPORTANT DESIGN NOTE: ALL IDEAS, DESIGNS, ARRANGEMENTS AND PLANS INDICATED OR REPRESENTED BY THESE DRAWINGS ARE OWNED BY AND THE PROPERTY OF PRL GLASS SYSTEMS INC. NO PART THEREOF SHALL BE REPRODUCED, COPIED, ADAPTED, DISTRIBUTED TO OTHERS, PUBLISHED, SOLD OR OTHERWISE USED WITHOUT THE PRIOR WRITTEN CONSENT OF AND APPROPRIATE COMPENSATION TO PRL GLASS SYSTEMS INC. COPYRIGHT ©

ARCHITECT OF RECORD'S APPROVAL

STRUCTURAL ENGINEER OF RECORD'S APPROVAL

STRUCTURAL ENGINEER'S APPROVAL

GENERAL CONTRACTOR'S APPROVAL

REVISIONS	BY
▲	
▲	
▲	
▲	
▲	

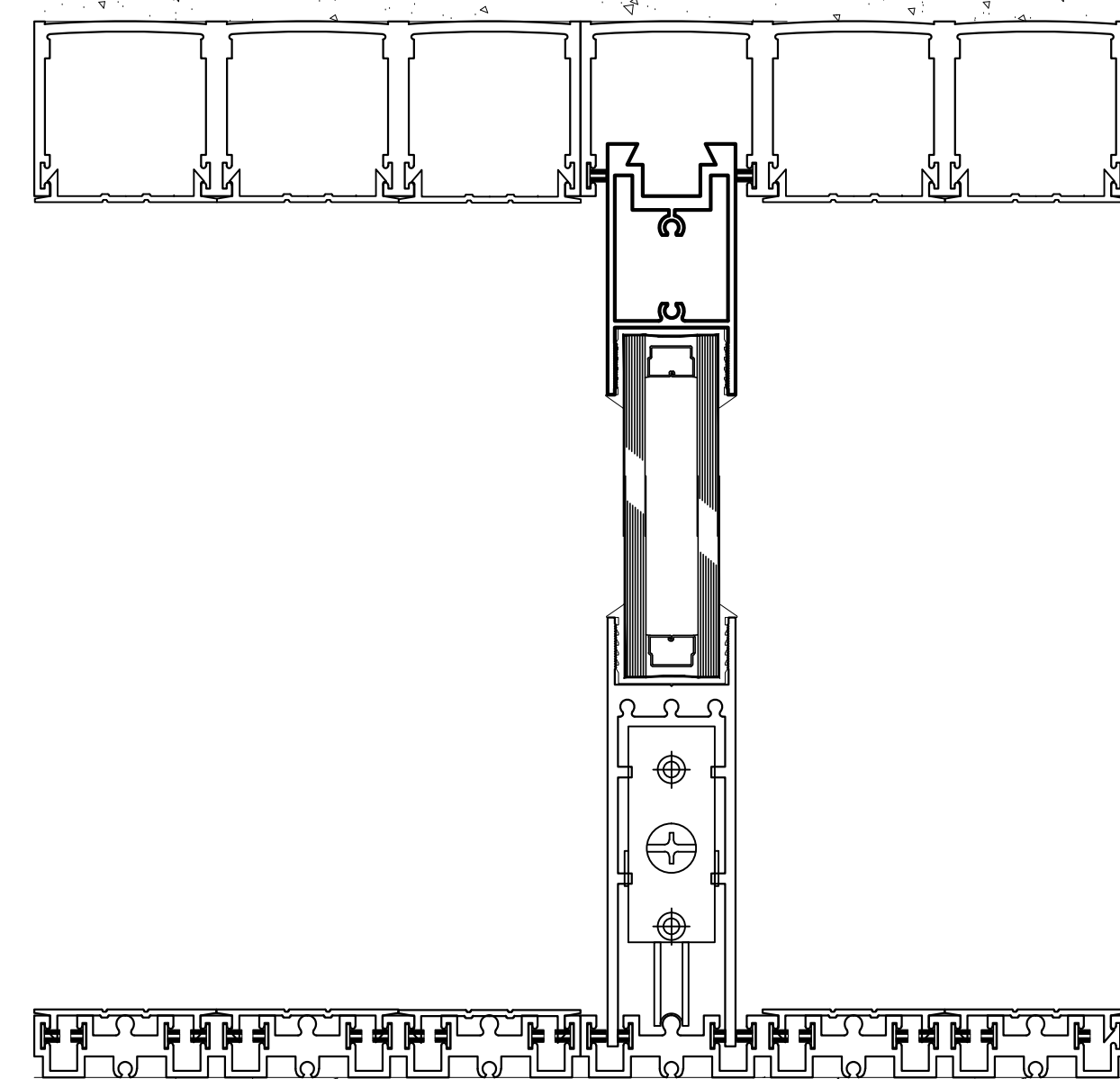
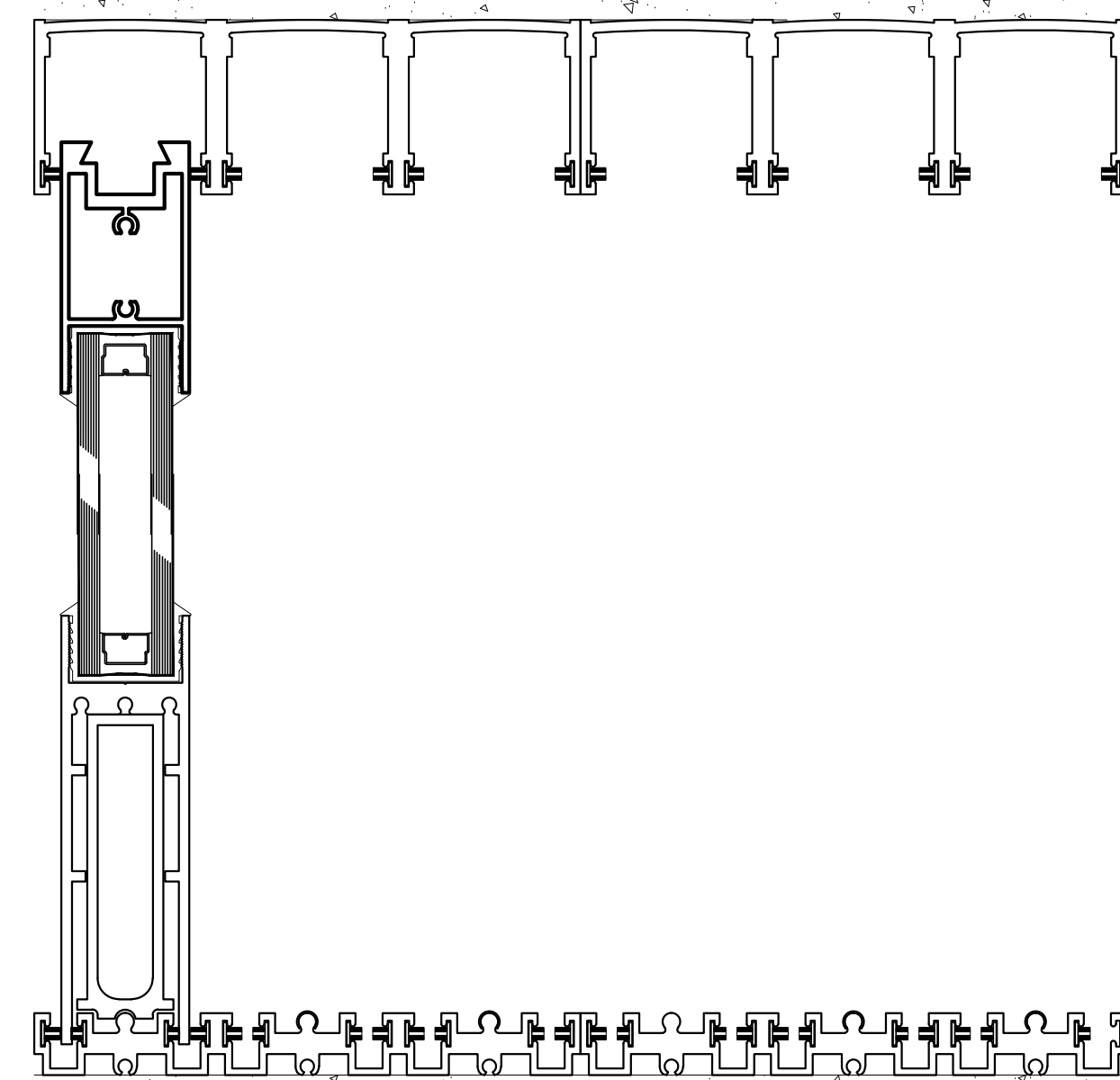
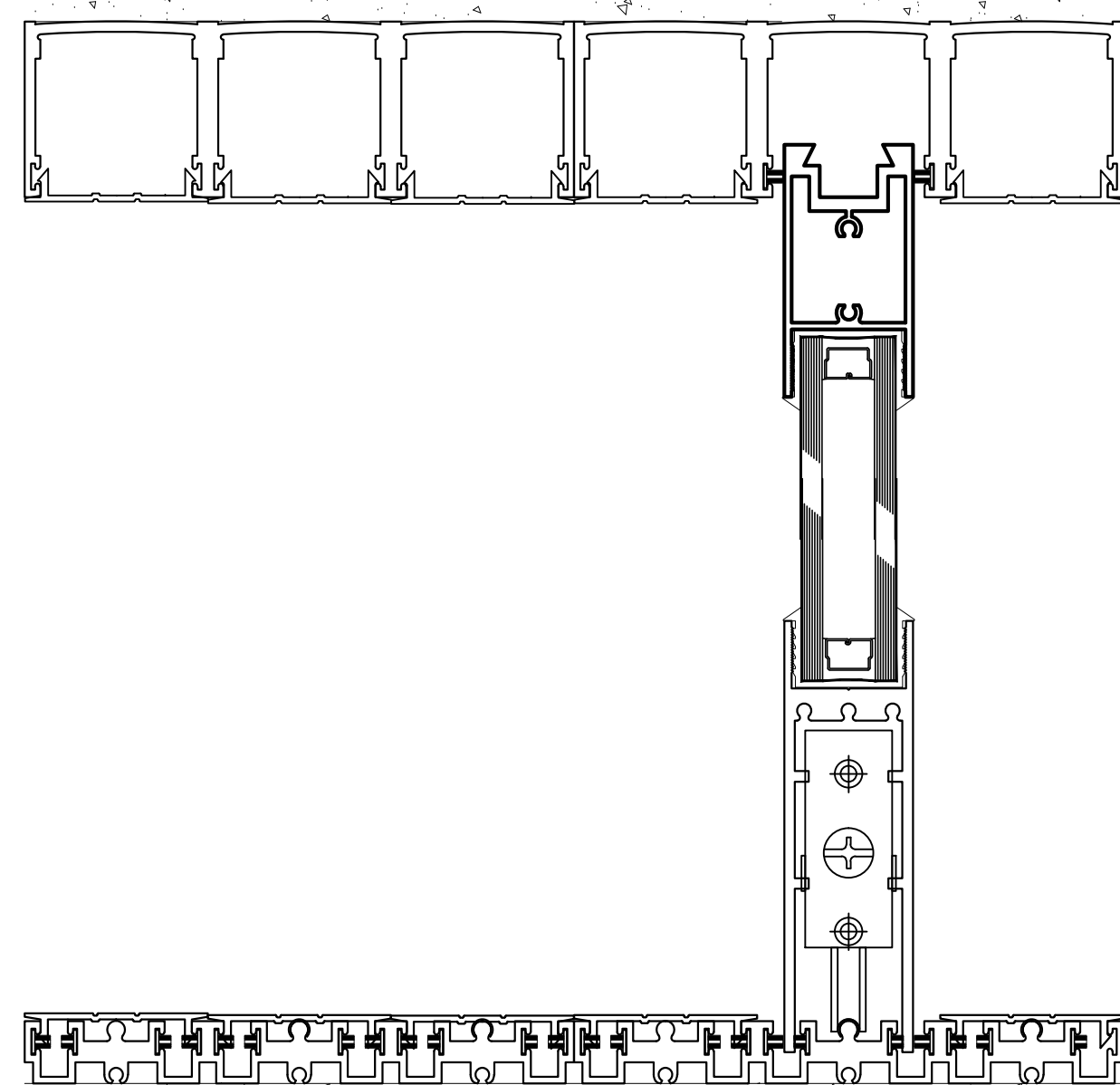
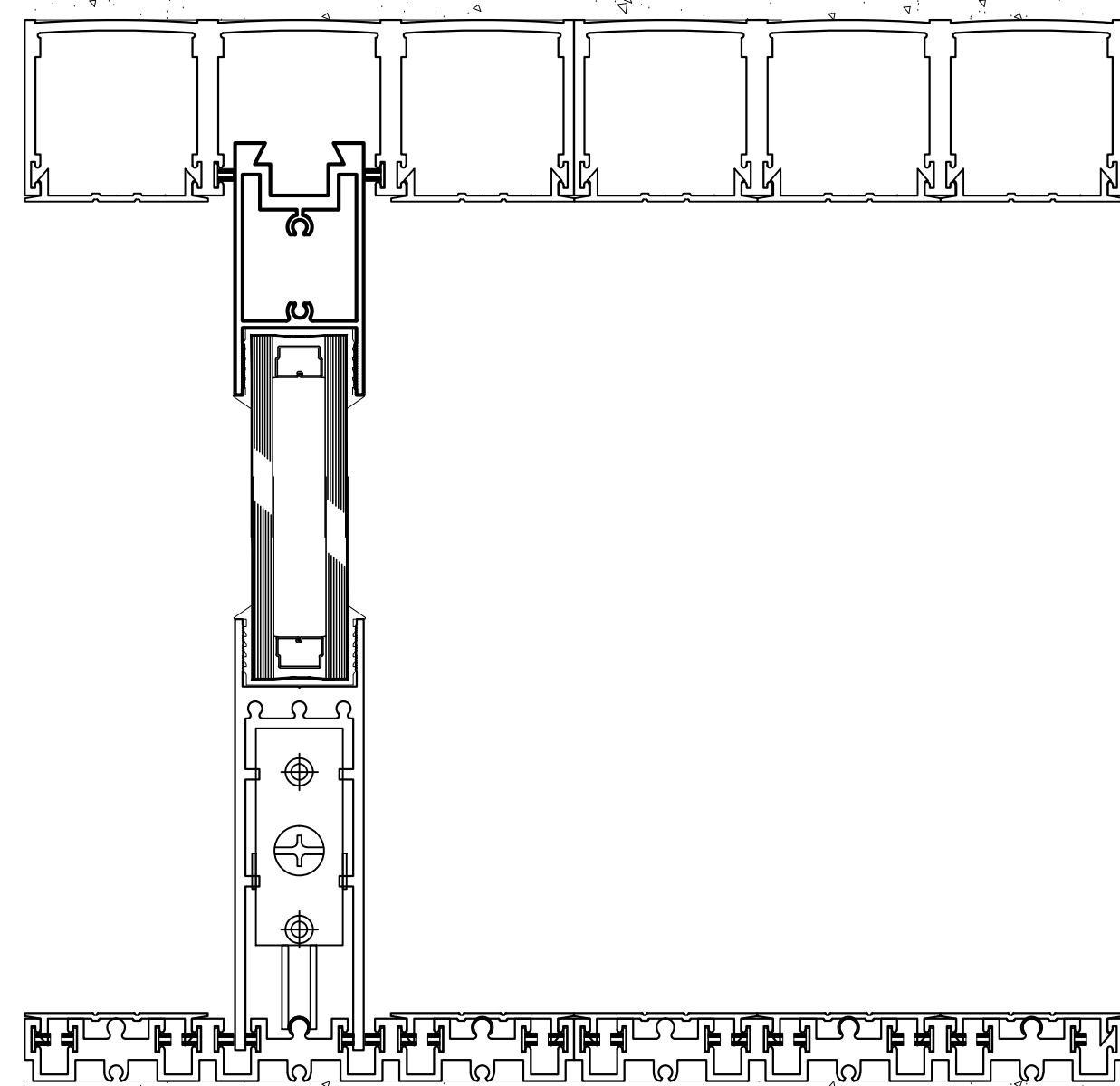
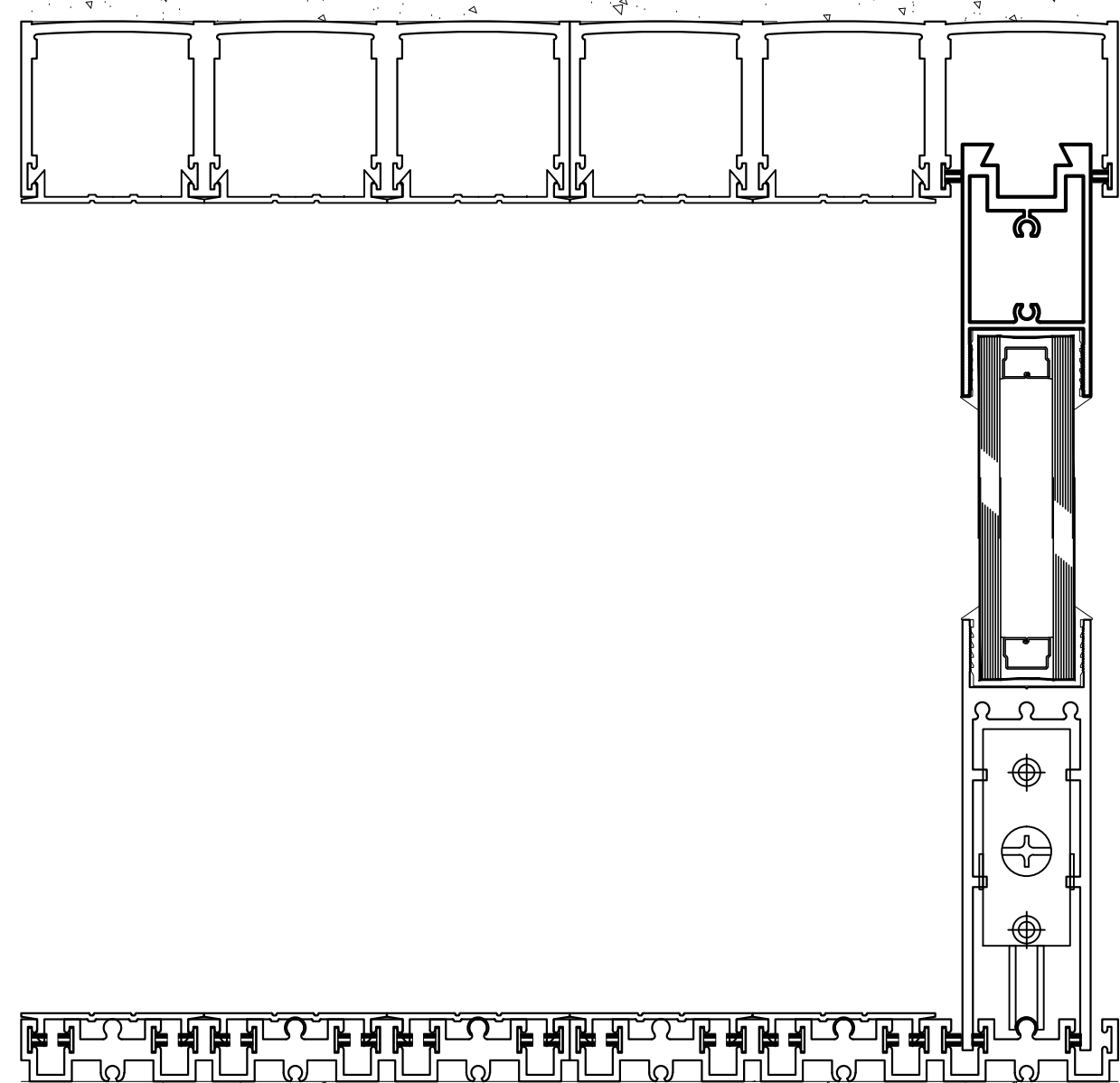
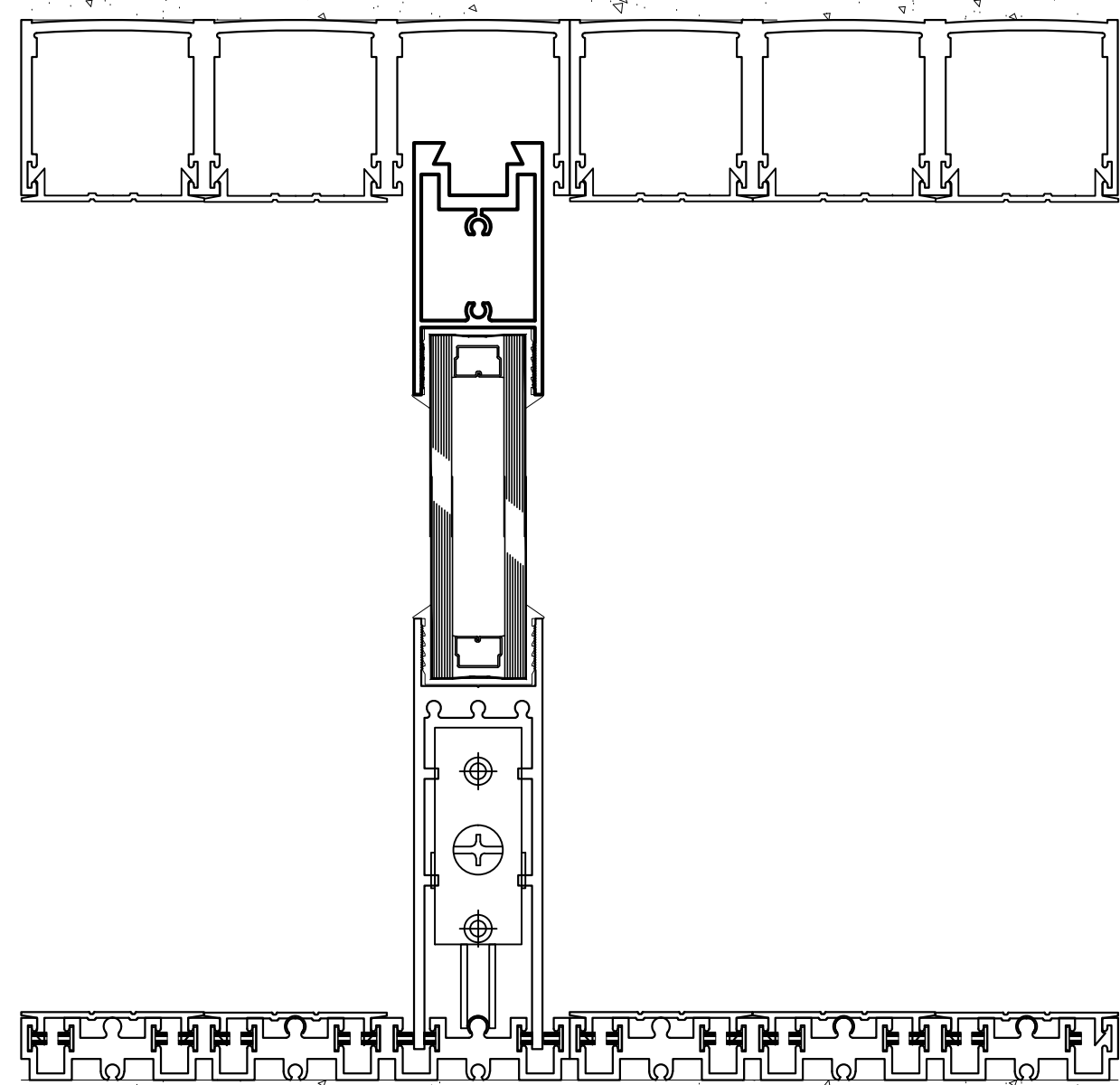
job name
 job name
 job name
 address

GENERAL CONTRACTOR: XXXXXXXX ARCHITECT: XXXXXXXX

DATE: March, 21, 2014
 SCALE: XXXXX
 DRAWN: P
 JOB: XXXXXXXX
 SHEET:

2.01

THIS DRAWING IS NOT TO SCALE IF NOT PRINTED ON PAPER



IMPORTANT DESIGN NOTE: ALL DECS, DESIGNS, ARRANGEMENTS AND PLANS INDICATED OR REPRESENTED BY THESE DRAWINGS ARE OWNED BY AND THE PROPERTY OF PRL GLASS SYSTEMS INC. NO PART THEREOF SHALL BE REPRODUCED, COPIED, ADAPTED, DISTRIBUTED TO OTHERS, PUBLISHED, SOLD OR OTHERWISE USED WITHOUT THE PRIOR WRITTEN CONSENT OF AND APPROPRIATE COMPENSATION TO PRL GLASS SYSTEMS INC. COPYRIGHT ©

ARCHITECT OF RECORD'S APPROVAL

STRUCTURAL ENGINEER OF RECORD'S APPROVAL

STRUCTURAL ENGINEER'S APPROVAL

GENERAL CONTRACTOR'S APPROVAL

REVISIONS	BY
▲	
▲	
▲	
▲	
▲	

job name
 job name
 job name
 address

GENERAL CONTRACTOR: XXXXXXXX ARCHITECT: XXXXXXXX

DATE: March, 21, 2014

SCALE: xxxxxx

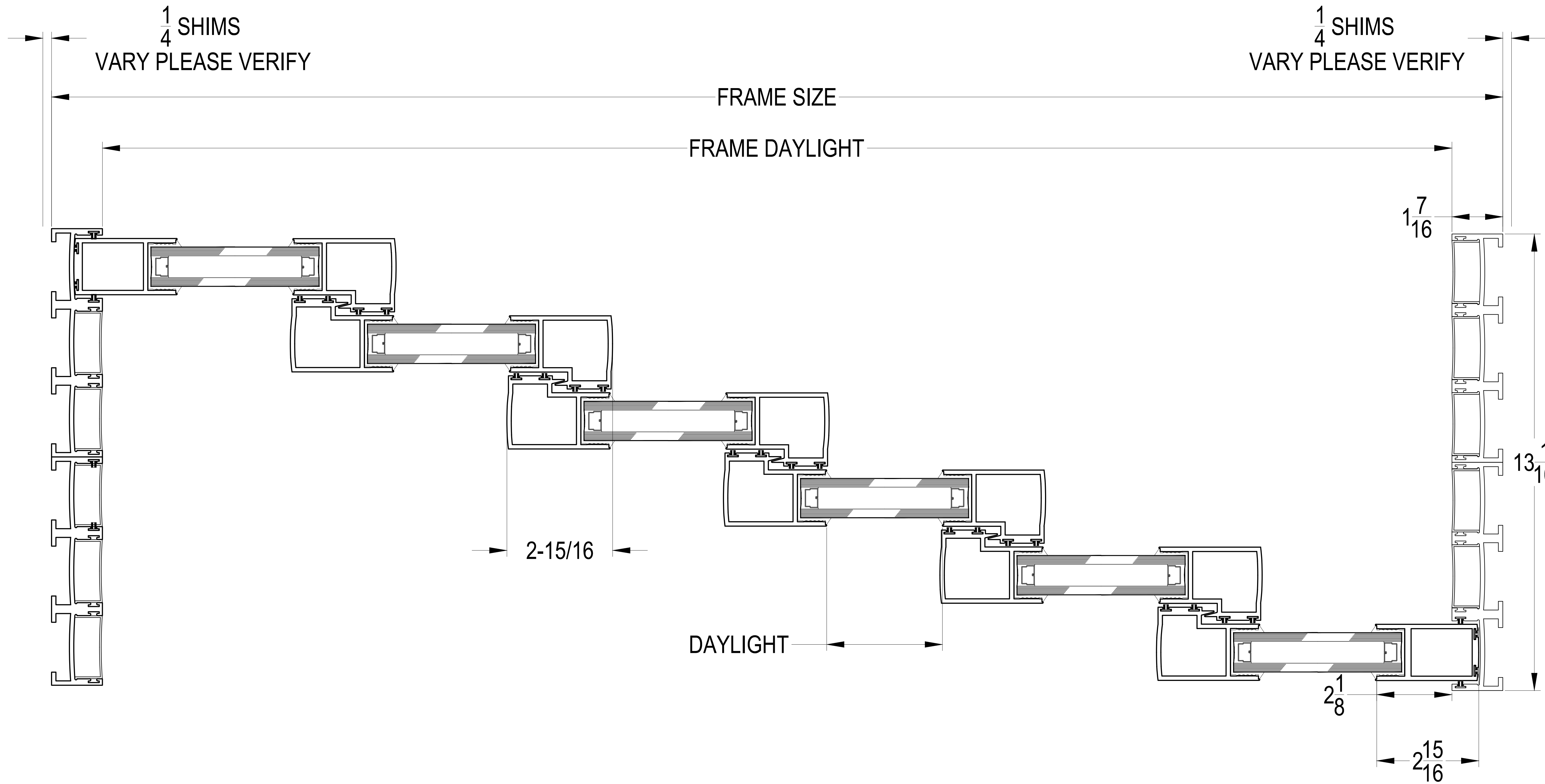
DRAWN: P

JOB: XXXXXXXX

SHEET

3.01

THIS DRAWING IS NOT TO SCALE IF NOT PRINTED ON 24" X 36" PAPER



IMPORTANT DESIGN NOTE: ALL DECS, DESIGNS, ARRANGEMENTS AND PLANS INDICATED OR REPRESENTED BY THESE DRAWINGS ARE OWNED BY AND THE PROPERTY OF PRL GLASS SYSTEMS INC. NO PART THEREOF SHALL BE REPRODUCED, COPIED, ADAPTED, DISTRIBUTED TO OTHERS, PUBLISHED, SOLD OR OTHERWISE USED WITHOUT THE PRIOR WRITTEN CONSENT OF AND APPROPRIATE COMPENSATION TO PRL GLASS SYSTEMS INC. COPYRIGHT ©

ARCHITECT OF RECORD'S APPROVAL

STRUCTURAL ENGINEER OF RECORD'S APPROVAL

STRUCTURAL ENGINEER'S APPROVAL

GENERAL CONTRACTOR'S APPROVAL

REVISIONS	BY
▲	
▲	
▲	
▲	
▲	

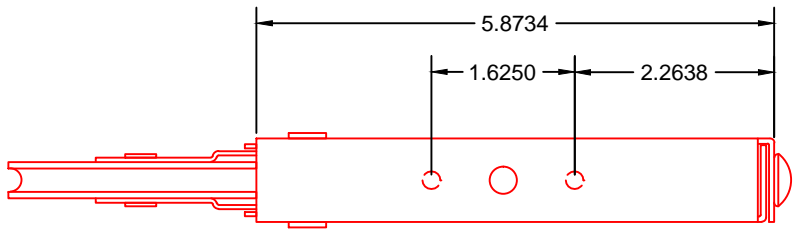
job name
job name
job name
address

GENERAL CONTRACTOR: XXXXXXXX ARCHITECT: XXXXXXXX

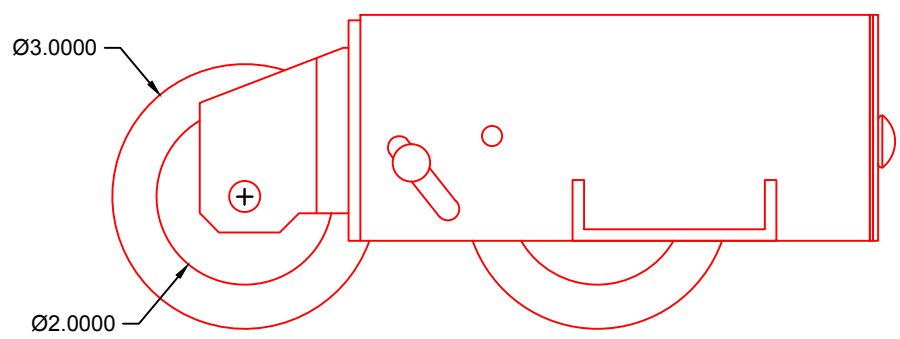
DATE: March, 21, 2014
SCALE: XXXXX
DRAWN: P
JOB: XXXXXXXX
SHEET

4.01

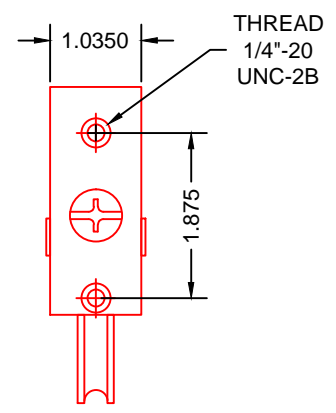
THIS DRAWING IS NOT TO SCALE IF NOT PRINTED ON 24" X 36" PAPER



top view



front view



side view

PRL GLASS SYSTEMS INC.
 Web Site: www.prlglass.com www.prlaluminum.com

Telephone : (877) 775-25856 251 Mason Way
 Fax No. : (626) 968-95256 City of industry, C.A.

TITLE MAX Slider

details

MAX Slider
 mammoth
 tandem bottom roller

mammoth tandem roller



SCALE XXXXX

DATE 2/22/2011

DRAWING NAME
 MAX Slider details XXXXXO.dwg

DRAFTPERSON P

